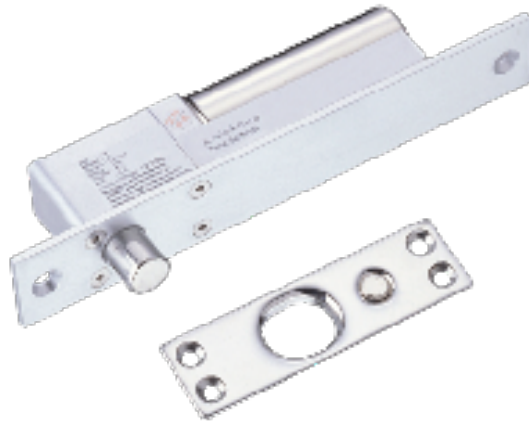


DHI-ASF802

Electric Drop bolt



Features

- Photoelectric control technology to prevent the mechanical failure
- Ultra-low temperature design, more safe and more durable
- Ultra low power design, more durable and more environmental protection
- 500,000 electricity aging test
- Built-in reverse current protection circuit
- A microprocessor chip control circuit

Technical Specification

Electronic

Working voltage	DC12V
Working current	110mA
Lock hold interval	0/3/6/9s

General

Applications	Wooden door, metal door, fire door, etc
Dimensions	205*42*40mm
Weight	0.72kg

Working Environment

Working temperature	-20°C~+55°C
Working humidity	≤95%

Dimensions (mm)

